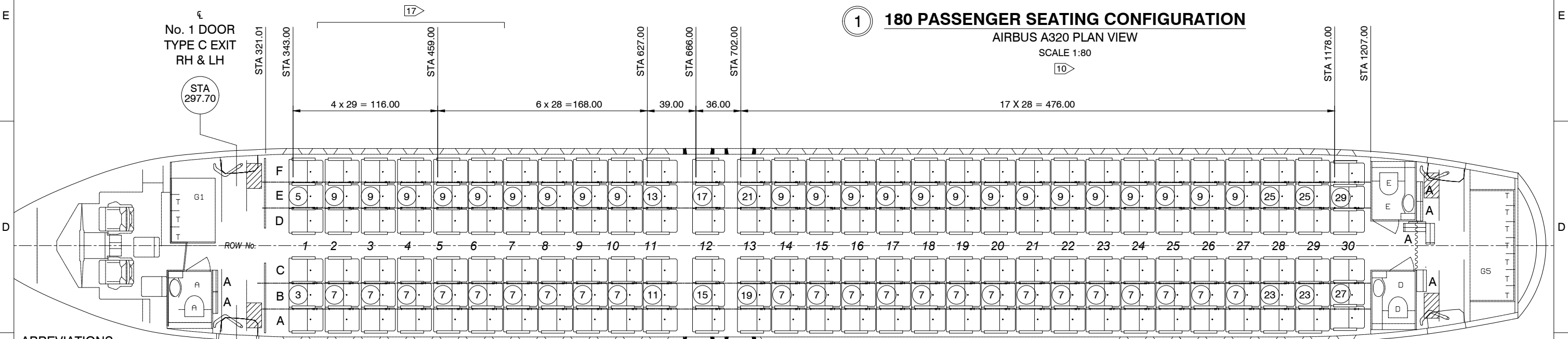


AES
OFFICIAL ISSUE
DATE: 27.05.2024
COPY

TABLE 1	
INSTLN No.	EFFECTIVITY
-001	5086

REVISIONS				
DWG REV No.	RELEASE DOC.	ISSUE DATE:	DWG CHANGE	APP BY:
00	AES-0602-01-DRN-01	27.05.2024	NEW	



ABBREVIATIONS

- IAT IN ARM TABLE
- STD STANDARD
- LH LEFT HAND
- RH RIGHT HAND
- E/EXIT EMERGENCY EXIT

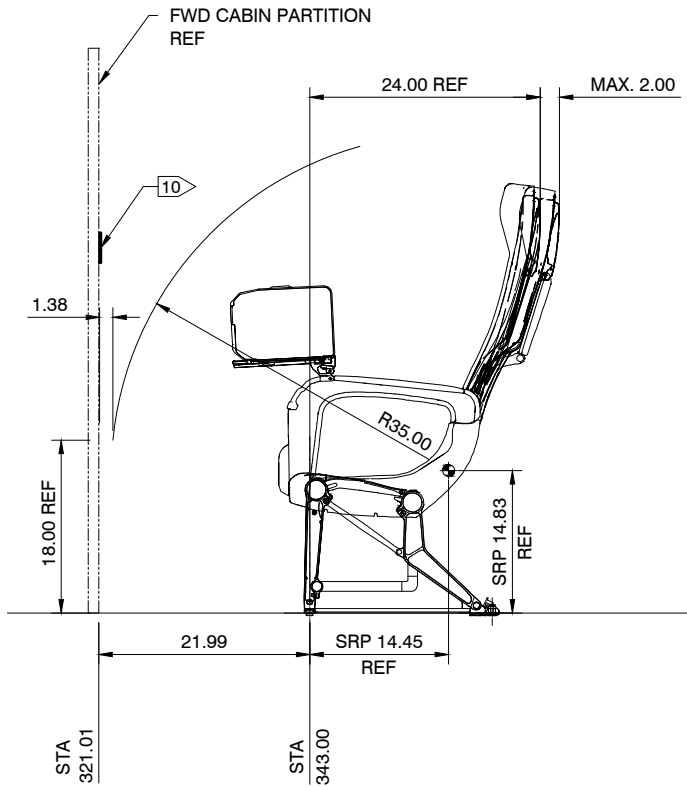
NOTES

1. THIS DRAWING DETAILS A 180 PAX CONFIGURATION IN A320 A/C AND SHOULD BE READ IN CONJUNCTION WITH AES MODIFICATION AES-0602-01-MS AND AES-0602-01-MEI-01.
2. SEAT POSITIONS ARE DIMENSIONED TO THE CENTRELINE OF THE SEAT FRONT FOOT STUD LOCKED IN THE SEAT TRACK - SEE DETAIL D, SHT 3.
3. ALL SEAT PITCHES ARE TYPICAL FOR BOTH LEFT AND RIGHT SIDES.
4. REMOVE ECONOMY CLASS SEATS IN ACCORDANCE WITH THE AMM TASK 25-21-41-000-001-A. INSTALL ECONOMY CLASS SEATS IN ACCORDANCE WITH THE SEAT CMM 25-25-69 AND AMM TASK 25-21-41-400-001-A.
5. THE CENTER AISLE EXCEEDS THE MINIMUM REQUIREMENTS (AS DESCRIBED IN CS 25.815) OF 15" WIDE UP TO A HEIGHT OF 25" FROM THE FLOOR AND 20" WIDE ABOVE 25" FROM THE FLOOR. REFER TO DETAIL E, SHT 3.
6. OUTBOARD SEAT COMPRESSIBLE CUSHIONS AT ROWS 12 & 13 MUST NOT EXCEED A HEIGHT OF 18.8" FROM FLOOR LEVEL, WHEN EGRESS PATH IS EQUAL OR PLUS THAN 10".
7. HEADSTRIKE OF FRONT ROW PASSENGER IS PREVENTED BY MAINTAINING A CLEARANCE OF 35" MEASURED FROM CUSHION REFERENCE POINT (CRP) TO FWD BULKHEAD. THIS DISTANCE ALSO TAKES INTO ACCOUNT LITERATURE POCKETS AND OTHER FITMENTS ON THE BULKHEAD - SEE DETAIL A, SHT 2.
8. A PLACARD MUST BE INSTALLED ON EACH OVERWING EXIT HATCH STATING THE WEIGHT AND OPERATION OF THE HATCH. THE HATCH WEIGHT & OPERATION PLACARD MUST BE READABLE BY ALL PASSENGERS SEATED ADJACENT TO AND FACING THE PASSAGEWAY TO THE EXIT. OPERATIONAL PLACARD MUST BE INSTALLED ON ADJACENT SEAT BACKS TOO.
9. EACH PASSAGEWAY TO ALL TYPE C EXITS IS UNOBSTRUCTED AND IS AT LEAST 20" WIDE WITH ADJACENT ASSIST SPACE OF 12" BY 20".
10. MAKE SURE A FASTEN SEATBELT WHILE SEATED AND LIFEJACKET LOCATION PLACARD IS VISIBLE AT ALL SEAT LOCATIONS.
11. MAKE SURE ALL PASSENGER SEATS ARE EQUIPPED WITH (E)TSO C22G APPROVED SEAT BELTS.
12. MAKE SURE ALL PASSENGER SEATS ARE EQUIPPED WITH SERVICEABLE AND (E)TSO C13F (OR LATER REV) APPROVED LIFE VESTS.
13. RE-USE EXISTING SEAT TRACK COVERS WHEN POSSIBLE. TRIM AND INSTALL SEAT TRACK COVER (ITEM 39) AS REQUIRED THROUGHOUT THE CABIN TO SUIT PASSENGER SEATS LAYOUT AFTER SEATS ARE INSTALLED. COVER ALL EXPOSED SEA TRACK.
14. PSU LAYOUT IS AFFECTED BY THIS CONFIGURATION, REFER TO AES-0602-01-MEI-01 FOR APPLICABLE PSU DRG. MAKE SURE O2 MASKS DROP WITHIN REFERENCED ZONE, ADJUST SPACER PANELS IF REQUIRED. DO NOT DISCONNECT PSU OR OXYGEN MODULES.
15. A/C IS TO BE OPERATED WITH A MINIMUM CABIN CREW OF 4 WITH THIS SEATING LAYOUT.
16. SEAT WEIGHT TAKEN FROM SEAT DATA PLATE.
17. MCD RANGE (REF), INSTALLATION PER ZODIAC AEROSPACE EASA APPROVED ENGINEERING DATA.

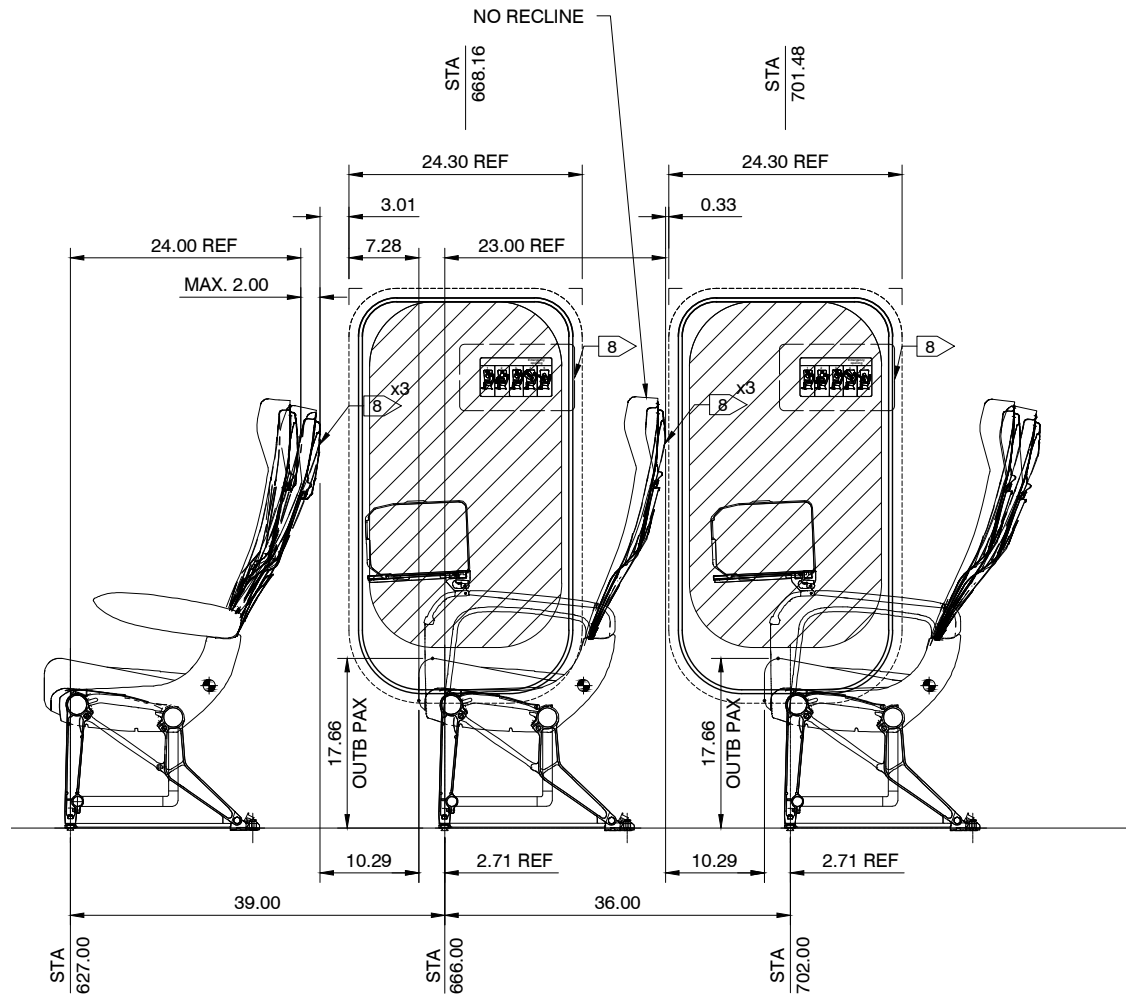
A/R	ITEM No.	PART NUMBER	ITEM ISS	KEYWORD/DESCRIPTION	MATERIAL	SPECIFICATION	DIMENSIONS	TREATMENT	OR REMARKS
39		ABS5643AA29-23		SEAT TRACK COVER					
1	29	3510A377-32-112		TRIPLE RH STD - NARROW		82.01 lb [37.20 Kg]			16
1	27	3510A377-31-112		TRIPLE LH STD - NARROW		82.67 lb [37.50 Kg]			16
2	25	3510A377-32-102		TRIPLE RH - STRETCHER PROVISION		82.23 lb [37.30 Kg]			16
2	23	3510A377-31-102		TRIPLE LH - STRETCHER PROVISION		82.45 lb [37.40 Kg]			16
1	21	3510A377-32-482		TRIPLE RH IAT WALLSIDE: NO ARMREST + SPECIAL SEAT CUSHION		97.66 lb [44.30 Kg]			16
1	19	3510A377-31-482		TRIPLE LH IAT WALLSIDE: NO ARMREST + SPECIAL SEAT CUSHION		97.44 lb [44.20 Kg]			16
1	17	3510A377-32-472		TRIPLE RH IAT - SPEC UPR - SPECIAL LATCH NO COAT HOOK - WALL SIDE: NO ARMREST + SPECIAL SEAT CUSHION		96.56 lb [43.80 Kg]			16
1	15	3510A377-31-472		TRIPLE LH IAT - SPEC UPR - SPECIAL LATCH NO COAT HOOK - WALL SIDE: NO ARMREST + SPECIAL SEAT CUSHION		97.22 lb [44.10 Kg]			16
1	13	3510A377-32-122		TRIPLE RH STD - SPECIAL LATCH - NO COAT HOOK		82.67 lb [37.50 Kg]			16
1	11	3510A377-31-122		TRIPLE LH STD - SPECIAL LATCH - NO COAT HOOK		82.45 lb [37.40 Kg]			16
23	9	3510A377-32-092		TRIPLE RH STD		82.67 lb [37.50 Kg]			16
23	7	3510A377-31-092		TRIPLE LH STD		82.89 lb [37.60 Kg]			16
1	5	3510A377-32-262		TRIPLE RH IAT		97.44 lb [44.20 Kg]			16
1	3	3510A377-31-262		TRIPLE LH IAT		97.89 lb [44.40 Kg]			16
1		-001	1	180 PAX SEATING CONFIGURATION					ALL

AES-0602-01-DWG-01-001	CHECKED BY: RH	DRAWN BY: L BARROSO	MOD No: AES-0602-01-MS		©2024 ALL RIGHTS RESERVED. THE INFORMATION CONTAINED HEREIN IS PROPRIETARY TO DOA AEROSPACE LIMITED (A/AEROSPACE ENGINEERING SOLUTIONS) AND SHALL NOT BE REPRODUCED OR DISCLOSED WITHOUT THE OWNERS WRITTEN PERMISSION. EASA APP.: EASA.21J.722 THIRD ANGLE PROJECTION
	INTERIOR CVE: <i>[Signature]</i>	DATE: MARCH 2024	DIMENSIONS IN: INCHES	AIRCRAFT TYPE: A320-214	
	STRUCTURES CVE: <i>[Signature]</i>	SCALE: AS NOTED AT A3 U.O.S.	LIMITS: ± 0.1 U.O.S.	SURFACE FINISH: N/A U.O.S.	
	SYSTEMS CVE: <i>[Signature]</i>	TITLE: 180 PAX SEATING CONFIGURATION		AES-0602-01-DWG-01	

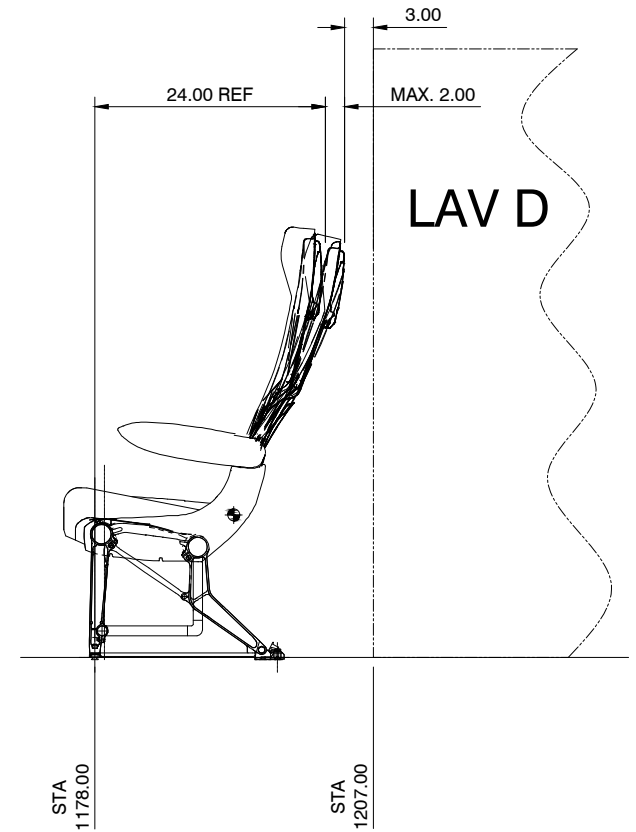
REVISIONS				
DWG REV No.	RELEASE DOC.	ISSUE DATE:	DWG CHANGE	APP BY:
00			SEE SHEET 1	



DETAIL A
 SEAT ROW 1, VIEW LOOKING OUTB
 SCALE 1:20



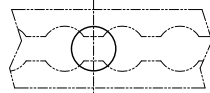
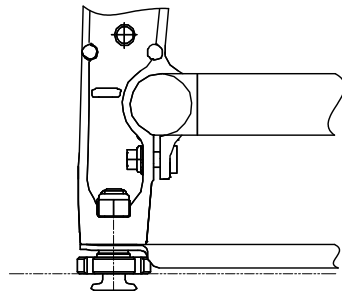
DETAIL B
 OVERWING EXIT ROW
 (SEAT ROW 11, 12 & 13)
 SCALE 1:20



DETAIL C
 AFT ROW SEAT
 SCALE 1:20

CHECKED BY: <i>R. Handley</i>	DRAWN BY: L BARROSO	MOD No: AES-0602-01-MS	©2024 ALL RIGHTS RESERVED. THE INFORMATION CONTAINED HEREIN IS PROPRIETARY TO DOA AEROSPACE ENGINEERING SOLUTIONS AND SHALL NOT BE REPRODUCED OR DISCLOSED WITHOUT THE OWNERS WRITTEN PERMISSION.	
INTERIOR CVE: <i>[Signature]</i>	DATE: MARCH 2024	DIMENSIONS IN: INCHES	NO MANUAL ALTERATIONS	0 IN 0.5 1.0 1.5 2.0 0 MM 10 20 30 40 50
STRUCTURES CVE: <i>[Signature]</i>	SCALE: AS NOTED AT A3 U.O.S.	LIMITS: ± 0.1 U.O.S.	SURFACE FINISH: N/A U.O.S.	EASA APP.: EASA.21J.722
SYSTEMS CVE: <i>[Signature]</i>	TITLE: 180 PAX SEATING CONFIGURATION		THIRD ANGLE PROJECTION AES-0602-01-DWG-01 SHEET 2 OF 3 SHEETS	

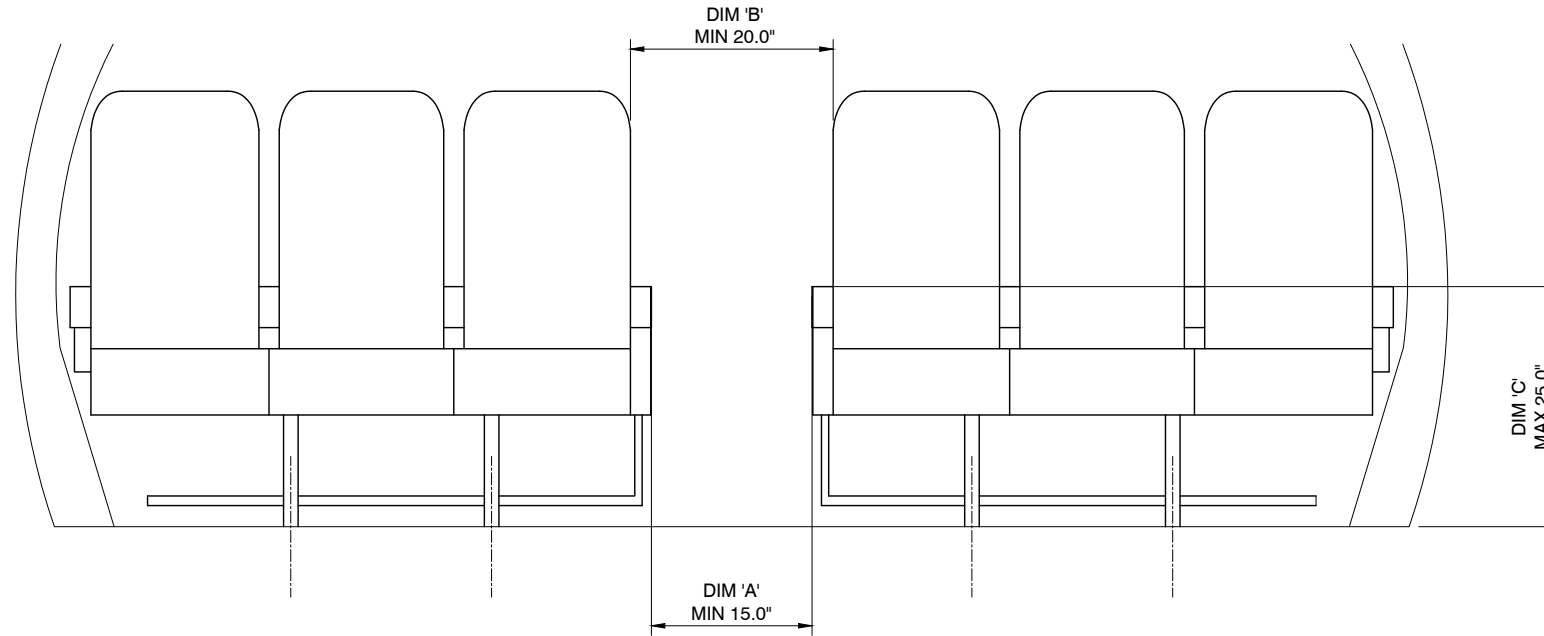
REVISIONS				
DWG REV No.	RELEASE DOC.	ISSUE DATE:	DWG CHANGE	APP BY:
00			SEE SHEET 1	



STA
XXX.00
REF

DETAIL D
SEAT FWD STUD LOCATION
NTS

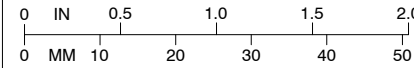
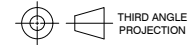
2/14



DETAIL E
MINIMUM AISLE WIDTH
SEE TABLE FOR AISLE DIMENSIONS
SCALE 1:20

5/9

SEAT ROW NUMBER	DIM 'A' (MIN 15.0")	DIM 'B' (MIN 20.0")
ROW 1	17.85"	21.42"
ROW 2 - 29	17.85"	21.42"
ROW 30	17.85"	20.63"

CHECKED BY: <i>R. Hanley</i>	DRAWN BY: L BARROSO	MOD No: AES-0602-01-MS	<small>©2024 ALL RIGHTS RESERVED. THE INFORMATION CONTAINED HEREIN IS PROPRIETARY TO DOA AEROSPACE ENGINEERING SOLUTIONS AND SHALL NOT BE REPRODUCED OR DISCLOSED WITHOUT THE OWNERS WRITTEN PERMISSION.</small> 
INTERIOR CVE: <i>[Signature]</i>	DATE: MARCH 2024	DIMENSIONS IN: INCHES	
STRUCTURES CVE: <i>[Signature]</i>	SCALE: AS NOTED AT A3 U.O.S.	LIMITS: ± 0.1 U.O.S.	SURFACE FINISH: N/A U.O.S.
SYSTEMS CVE: <i>[Signature]</i>	TITLE: 180 PAX SEATING CONFIGURATION		<small>EASA APP.: EASA.21J.722</small> 
			AES-0602-01-DWG-01
			SHEET 3 OF 3 SHEETS